



User's Guide

Legacy Automated Testing Bridge TestComplete – ALMComplete | QAComplete

Software as a Service Version

This document explains how to use the Legacy Automated Testing Bridge between TestComplete and ALMComplete or QAComplete's Test Management

ALMComplete | QAComplete

TestComplete

Software as a Service

December 2013

Important Notification

The Legacy Automation bridge for Test Management and TestComplete has been replaced with a more robust tighter integration with TestComplete.

For information about this feature, please see:

[TestComplete - Test Management Integration](#)

The following information is for reference only. This feature is no longer supported as of Release 9.9.0.

Narrative

Automated Testing has many benefits including:

- **Quicker Releases** – By having your regression test cases run automatically, your software quality team can concentrate on testing new features of your software and spend less time testing existing features.
- **Higher Quality Releases** – Your software releases will have fewer bugs and require less customer support because they will be of higher quality.
- **Happier Customers** – Your customers will be happier and more willing to serve as testimonials for future prospects.

TestComplete is SmartBear's awarding winning automated testing tool. By using the bridge between TestComplete and Test Management in ALMComplete or QAComplete, you can enjoy the reports a dashboards that demonstrate your automated test results.

Pre-Requisites

To get started with the Automated Testing Bridge, you'll need:

- **TestComplete or TestExecute version 8.x or higher**
- **ALMComplete or QAComplete Software as a Service**
- **Internet connection WITHOUT using a proxy (the webservice used by the bridge is not compatible with using a proxy)**

If you do not have a licensed copy of ALMComplete, QAComplete, TestComplete, or TestExecute, you can open free 30 day trials at <http://smartbear.com>.

If you are an On-Premises (self-hosted) ALMComplete or QAComplete account, please use this guide: http://www.softwareplanner.com/usersguide_TCEnt.pdf

There are additional configuration steps you must take for an on-premises installation.

Installing the Automated Testing Bridge

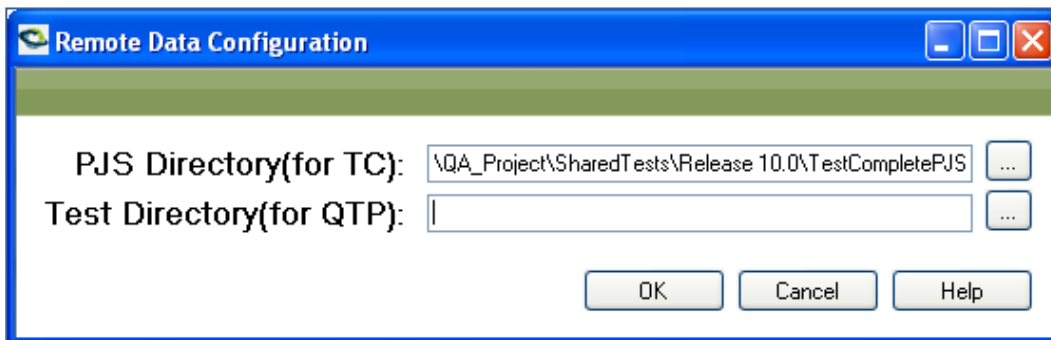
Installing the bridge is easy. Download the Automated Testing Bridge for your version of TestComplete from our downloads page at <http://support.smartbear.com/downloads/almcomplete/> and simply step through the installation process.

Using Remote Test Data

If your TestComplete project suites reside in a shared folder on a server, you will need to install the Automated Testing Bridge Data Source utility on the machine where your tests reside. Download the Source Data utility here:

www.softwareplanner.com/downloads/AutomatedTestingBridgeRemoteDataSetup.msi

When installing the utility, follow each installation step as usual. When the installation runs, you will see a window asking for the **PJS Directory (for TC)**. Use the ellipse to navigate to the folder where your TestComplete project suites reside (PJS Directory).



Leave the **Test Directory(for QTP)** blank and click OK. You'll see another window warning you the QTP directory is empty. Click OK.

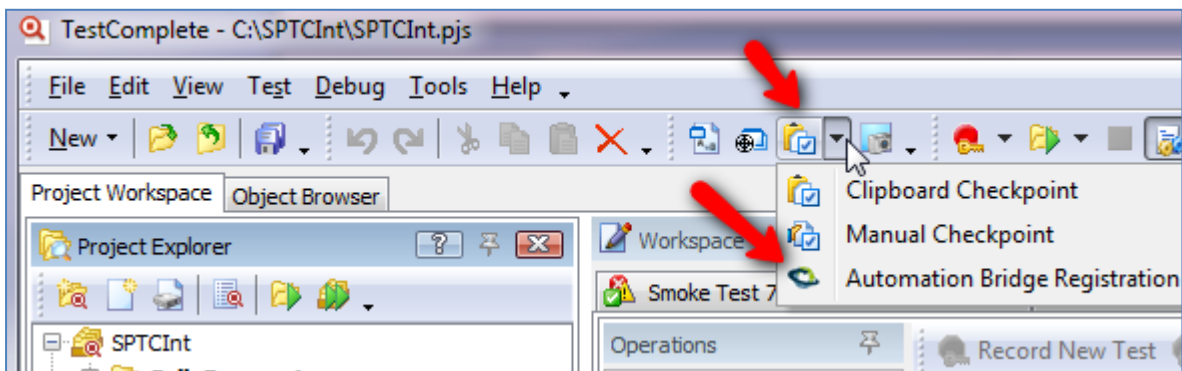
Note: you can also access the Remote Data Configuration utility from Start / All Programs / SmartBear / Automated Testing Bridge Remote Data / Remote Data Configuration.

Install and Register the Bridge

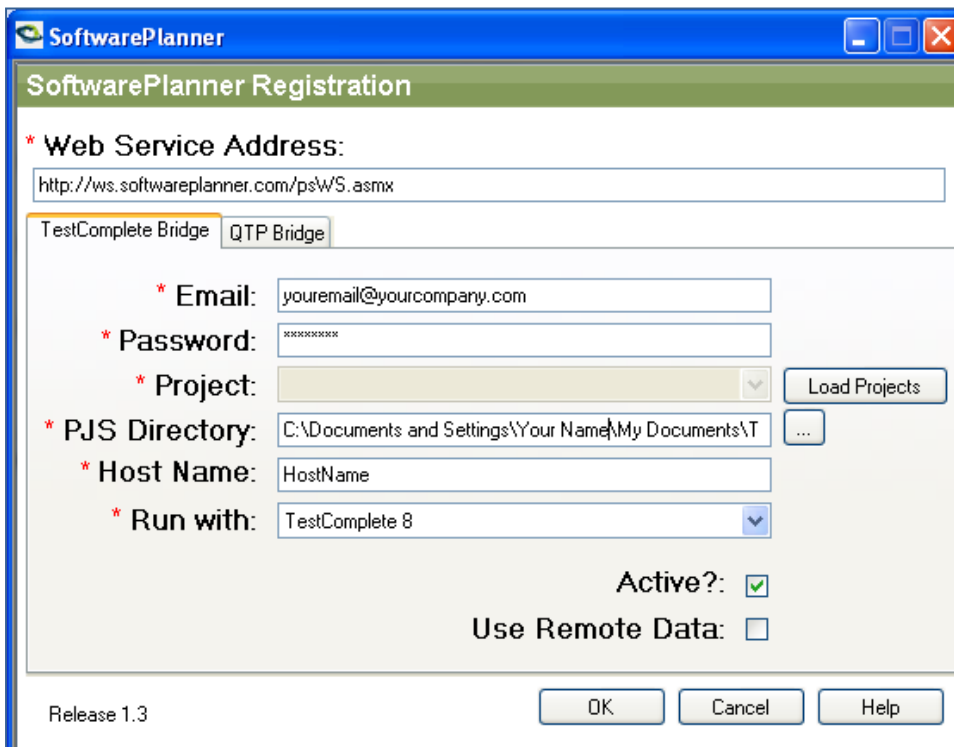
1. Download the installer (<http://www.softwareplanner.com/downloads/AutomatedTestingBridgeSetup.msi>), choose to Run it, and then click **Next** until it's fully installed.
2. Open TestComplete, and then open a Project Suite in which you would like the run results to be sent to SoftwarePlanner.

Alternately, you can set up the Registration from Start / All Programs / SmartBear / Automated Testing Bridge / SoftwarePlanner Registration.

3. Click on the Registration item in the TestComplete toolbar:



4. Fill in the details of the Registration Form:



The screenshot shows the 'SoftwarePlanner Registration' dialog box. It contains the following fields and options:

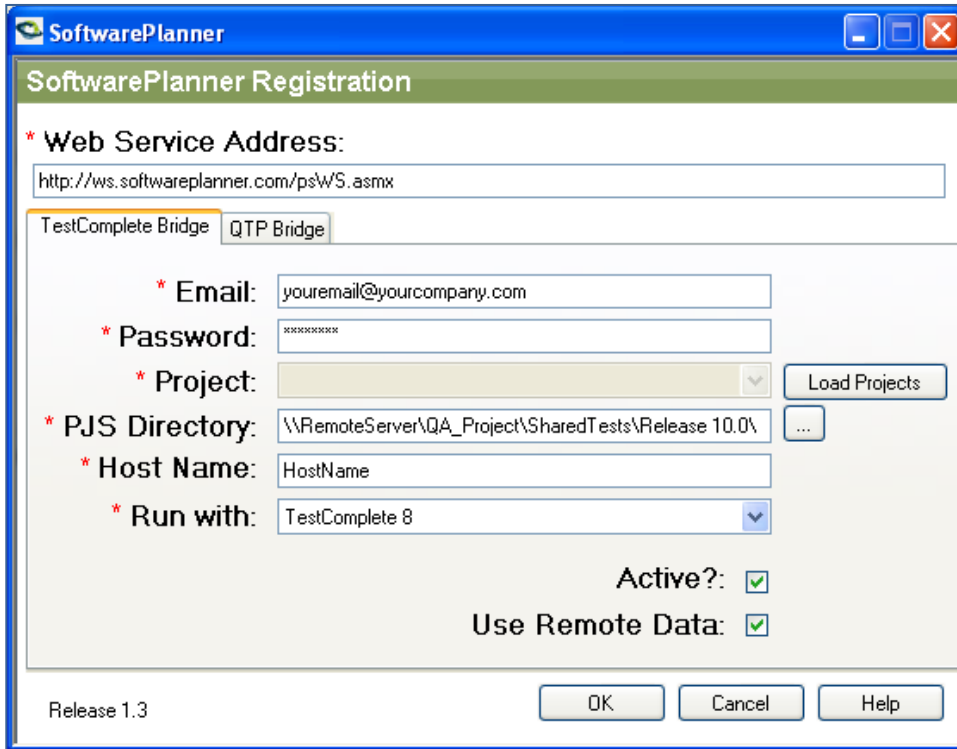
- Web Service Address:**
- Bridge Type:** Radio buttons for 'TestComplete Bridge' (selected) and 'QTP Bridge'.
- Email:**
- Password:**
- Project:**
- PJS Directory:**
- Host Name:**
- Run with:**
- Active?:**
- Use Remote Data:**

Buttons at the bottom: OK, Cancel, Help. Release 1.3 is noted in the bottom left corner.

Field	Description
Web Service Address	This is the location of the web services API for SoftwarePlanner. For Software as a Service clients, it is http://ws.softwareplanner.com/psws.asmx .
Email	This is your ALMComplete / QAComplete log in email address
Password	This is your ALMComplete / QAComplete password. This is case-sensitive.
Project	Click Load Projects and select a Project. This will be the project that the run information flows into.
PJS Directory	This is the root directory of where you keep all your TestComplete project suites. For example, if you keep have a directory c:\TestComplete Projects on your hard drive and have all your projects suites below that directory, you would set this to c:\TestComplete Projects . If you use My Documents your directory maybe similar to this: C:\Users\YourName\Documents\TestComplete 8 Projects
Host Name	This is your computer name. You can change this if you want the test logged under a different name.
Run With	Choose TestComplete or TestExecute (with the correct version you are running)
Active	Leave checked. Uncheck if you ever want to suspend logging to ALMComplete / QAComplete temporarily.

Pointing to Remote Tests

If your tests reside on a remote shared machine, use the ellipse to navigate to the PJS Directory on that machine. *This must be the same directory used in Remote Data Configuration above.*



Note: *this must be the full path, NOT a mapped drive.*

Check the **Use Remote Data** checkbox to tell the registration to look for the Remote Data Utility on the shared machine.

Logging Automated Run Results to SoftwarePlanner

Once you have installed the Automated Testing Bridge (and Remote Data) and configured the registration, define Test Items in your TestComplete projects.

These Test Items detail what tests you want to run, and the order they'll be run in. Once that is done, results will automatically be sent to SoftwarePlanner when:

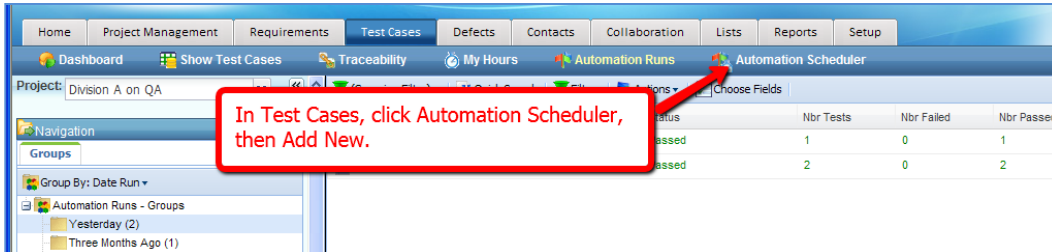
- You run the entire TestComplete project suite (it runs all ENABLED test items in all projects)
- You run an entire project (it runs all ENABLED test items in the selected project)
- You run a single test item inside of a project

Running a keyword test or script-based test directly (i.e., without running it from a test item), will not log the results to SoftwarePlanner. This is by design, so that you can run your scripts for validation while building them, and the 'testing your test' results do not get posted.

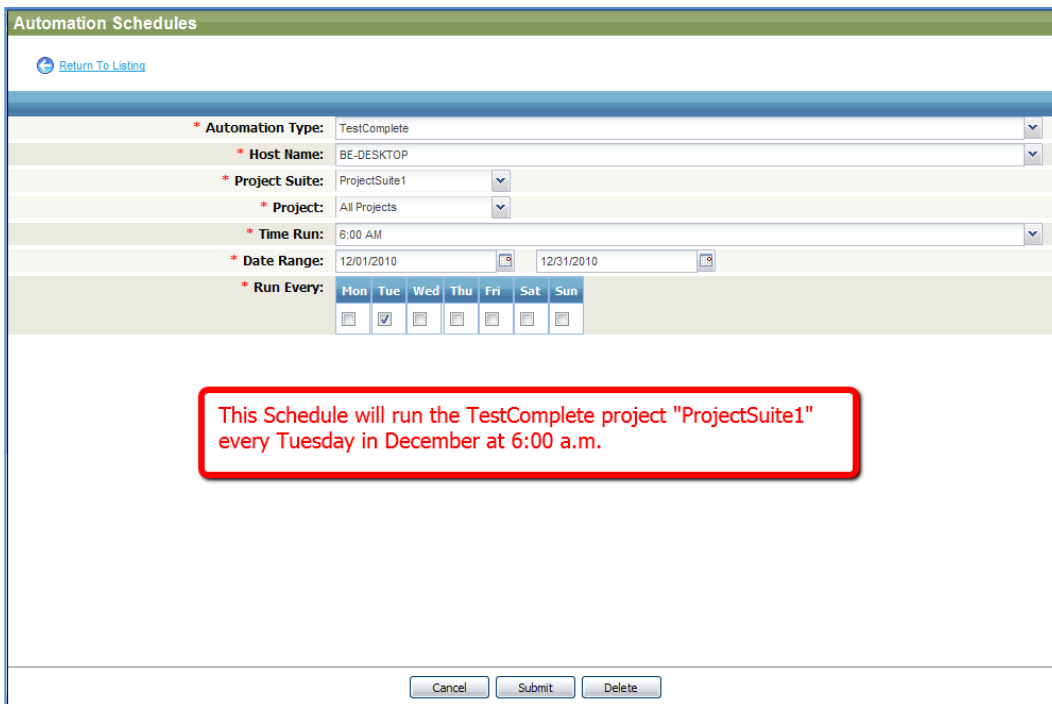
Automation Scheduler

In SoftwarePlanner, you can set up schedules to run TestComplete tests automatically. You must have the most recent bridge installed and registered in TestComplete. When you install the bridge, a service is also installed that monitors for scheduled tests at regular intervals.

Go to Test Cases, click on Automation Scheduler, then Add New

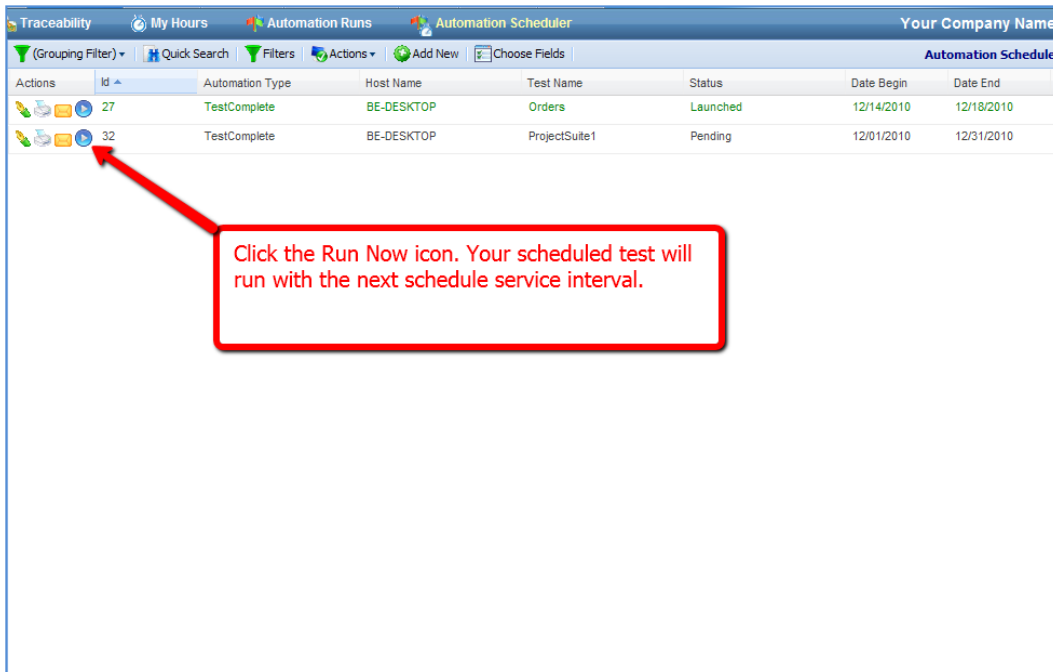


Click on the drop down arrow to select values for the fields.



- For **Automation Type** select TestComplete.
- The **Host Name** drop down will include the host where you configured the TestComplete bridge.
- Select your TestComplete **Project Suite** and **Project**.
- Select the desired time for the schedule using the **Time Run** drop down.
- The **Date Range** allows you to determine what date the schedule should start and what date it should end.
- Then select the desired day of the week using the **Run Every** checkboxes.
- Click **Submit** to save your schedule.

On the Automation Schedule listing screen, you can submit a scheduled test to run with the next schedule interval. Click the Run Now icon, and the test is submitted to run with the next schedule interval.



The results of your scheduled tests appear in Automation Runs along with any on-demand tests that you submitted from TestComplete.

NOTE: Make sure that TestComplete is NOT active on the host machine when the scheduled tests are submitted. The scheduler takes care of loading TestComplete for you.

Getting Help

If you have any questions about how to setup the Automated Testing Bridge or if you have suggestions for future enhancements, please check out our forums at www.smartbear.com/forums or contact our Support team at <http://www.softwareplanner.com/support>. Your feedback is important to us!