



User's Guide

Automated Testing Bridge HP Quick Test ProTM / SoftwarePlanner

This document explains how to use the SoftwarePlanner Bridge for HP Quick Test ProfessionalTM and the Automation Scheduler.

SoftwarePlanner Release 9.7.0

April 2011

ALMComplete | QAComplete

Narrative

Automated Testing has many benefits including:

- **Quicker Releases** – By having your regression test cases run automatically, your software quality team can concentrate on testing new features of your software and spend less time testing existing features.
- **Higher Quality Releases** – Your software releases will have fewer bugs and require less customer support because they will be of higher quality.
- **Happier Customers** – Your customers will be happier and more willing to serve as testimonials for future prospects.

HP Quick Test Professional™ (QTP™) is an awarding winning automated testing tool and SoftwarePlanner is an award winning test management tool, aimed at managing all phases of your software lifecycle. By using the bridge between QTP™ and SoftwarePlanner, you can enjoy the rich reporting capabilities of SoftwarePlanner, with detailed dashboards and reports that analyze your automated test runs.



Want to see how it works? Watch this movie:

http://www.softwareplanner.com/guidedtours/edgeui/Camtasia.asp?filename=SPQTPIntegration_Overview

Pre-Requisites

To get started with the Automated Testing Bridge, you'll need:

- **HP Quick Test Professional™ version 10 or higher**
- **ALMComplete or QAComplete Software as a Service or on-premises / enterprise edition, version 9.6**

If you do not have a licensed copy of ALMComplete or QAComplete, you can download a free 30 day trial at <http://smartbear.com>. If you don't have a licensed copy of HP QTP™, you can download a trial at <http://www.hp.com>.

Installing the Automated Testing Bridge

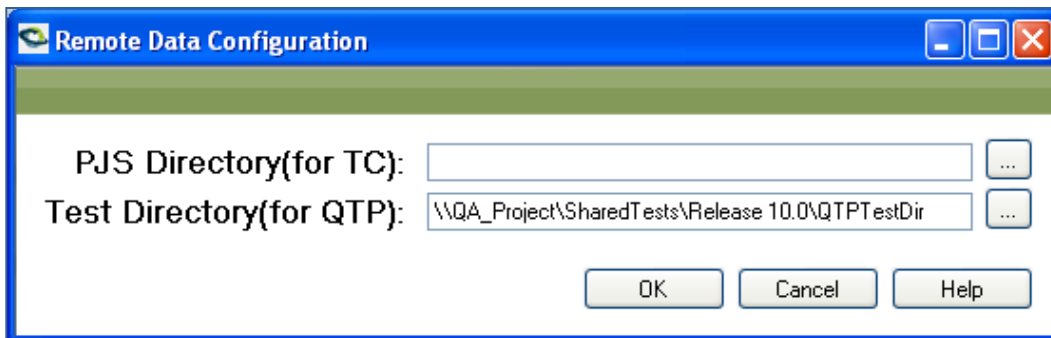
Installing the bridge is easy. Download the Automated Testing Bridge at <http://www.softwareplanner.com/downloads/AutomatedTestingBridgeSetup.msi> and simply step through the installation process.

Using Remote Test Data

If your test data resides in a shared folder on a server, you will need to install the Automated Testing Bridge Data Source utility on the machine where your tests reside. Download the Source Data utility here:

www.softwareplanner.com/downloads/AutomatedTestingBridgeRemoteDataSetup.msi

When installing the utility, follow each installation step as usual. When the installation runs, you will see a window asking for the **Test Directory (for QTP™)**. Use the ellipse to navigate to your Test Directory.



Leave the **PJS Directory (for TC)** blank and click OK. You'll see another window warning you the TC directory is empty. Click OK.

Note: you can also access the Remote Data Configuration utility from Start / All Programs / SmartBear / Automated Testing Bridge Remote Data / Remote Data Configuration.

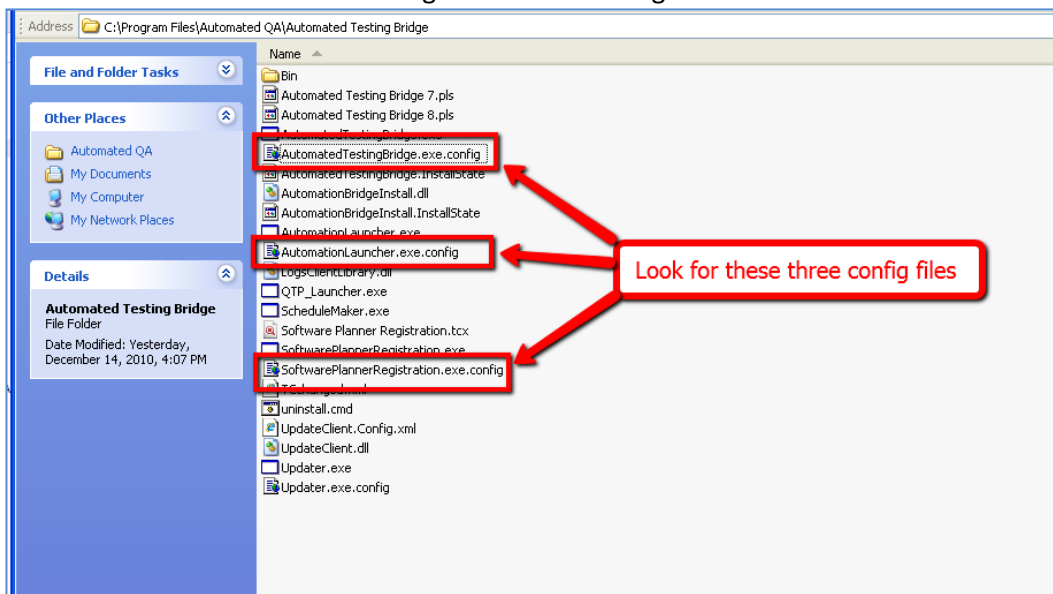
Step by Step Instructions

1. Download the installer (<http://www.softwareplanner.com/downloads/AutomatedTestingBridgeSetup.msi>), choose to Run it, and then click **Next** until it's fully installed.
2. **On-Premises / ENTERPRISE CLIENTS ONLY - *Skip this step if you use our Software as a Service version of ALMComplete or QAComplete – continue with step 3 below.***

If your company has an on-premises (self hosted) installation of ALMComplete or QAComplete, you will need to change the configuration files to point to your “appcode” (which is typically **agSPEnt** for on-premises / Enterprise clients).

- a. After installing the download, on your desktop, go to Program Files / Automated QA / Automated Testing Bridge
- b. Look for three Config files:

AutomatedTestingBridge.exe.config
AutomationLauncher.exe.config
SoftwarePlannerRegistration.exe.config



- c. **You will need to edit each of these three files.** First, create a backup copy of each and store the copies in a safe place.
- d. Open the files with Notepad or another text editor.
- e. Search for “psWS_AppCode”

- f. Replace the value “agSP” with “agSPEnt” (this is the default value for on-premises installations: if your AppCode differs, please use your correct value.)

```

4      <sectionGroup name="applicationSettings" type="System.Configuration.ApplicationSettingsGroup, System, Version=2.0.0.0,
5      Culture=neutral, PublicKeyToken=b77a5c561934e089">
6      <section name="AutomationBridge.My.MySettings" type="System.Configuration.ClientSettingsSection, System, Version=2.0.0.0,
7      Culture=neutral, PublicKeyToken=b77a5c561934e089" requirePermission="false"/>
8      </sectionGroup>
9      </configSections>
10     <system.diagnostics>
11     <sources>
12     <!-- This section defines the logging configuration for My.Application.Log -->
13     <source name="DefaultSource" switchName="DefaultSwitch">
14     <listeners>
15     <add name="FileLog"/>
16     <!-- Uncomment the below section to write to the Application Event Log -->
17     <add name="EventLog"/>
18     </listeners>
19     </source>
20     </sources>
21     <switches>
22     <add name="DefaultSwitch" value="Information"/>
23     </switches>
24     <sharedListeners>
25     <add name="FileLog" type="System.Diagnostics.EventLog, System, Version=4.0.0.0, Culture=neutral, PublicKeyToken=b03f5f7f11d50a3a" writeTo="Application Event Log" />
26     <!-- Uncomment the below section to write to the Application Event Log -->
27     <add name="EventLog" type="System.Diagnostics.EventLog, System, Version=4.0.0.0, Culture=neutral, PublicKeyToken=b03f5f7f11d50a3a" writeTo="Application Event Log" />
28     </sharedListeners>
29     </system.diagnostics>
30     <applicationSettings>
31     <AutomationBridge.My.MySettings>
32     <setting name="AutomationBridge_psWS_Service" serializeAs="String">
33     <value>http://localhost:4000/psWS/psws.asmx</value>
34     </setting>
35     <setting name="ScheduleServiceIntervalInSecs" serializeAs="String">
36     <value>60</value>
37     </setting>
38     <setting name="psWS_AppCode" serializeAs="String">
39     <value>agSP</value>
40     </setting>
41     </AutomationBridge.My.MySettings>
42     </applicationSettings>
43 </configuration>

```



- g. SAVE and repeat for each of the three config files.

3. ALL USERS CONTINUE HERE: Once installed, click **Start / All Programs / SmartBear / Automated Testing Bridge / SoftwarePlanner Registration**

4. Click on the **QTP Bridge** tab and fill in the details of the Registration Form:

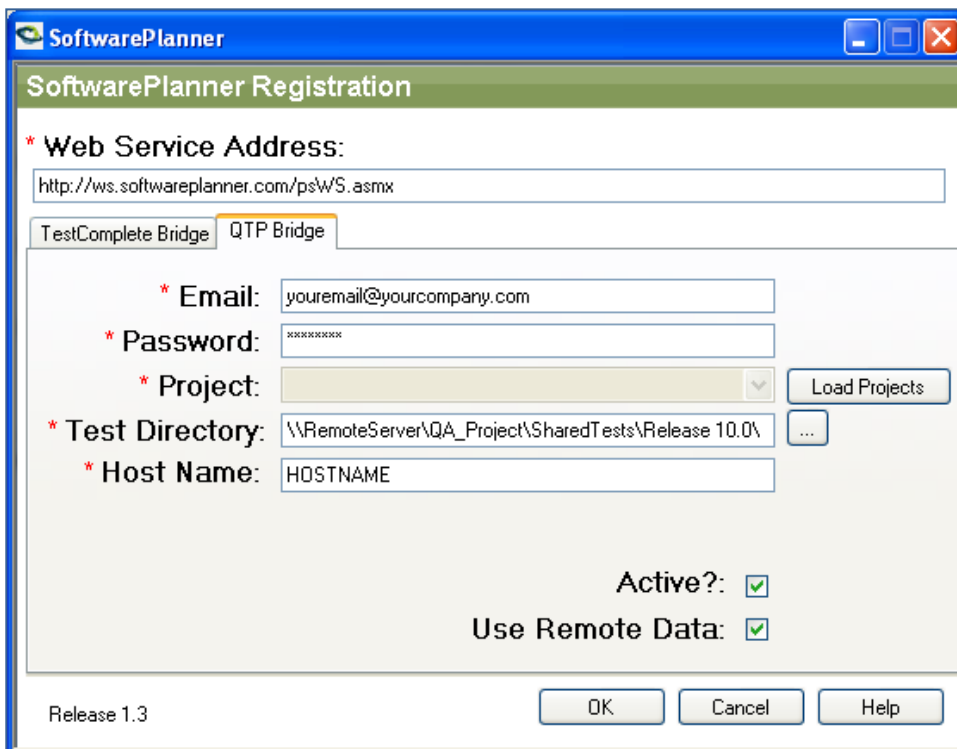
Field	Description
Web Service Address	<p>This is the location of the web services API for SoftwarePlanner.</p> <p>For Software as a Service clients, it is http://ws.softwareplanner.com</p> <p>For on-premises / Enterprise clients, log into your copy of ALMComplete or QAComplete and inspect the website address in your browser:</p>
Email	This is your ALMComplete / QAComplete log in email address
Password	This is your ALMComplete / QAComplete password. This is case-sensitive.
Project	Click Load Projects and select a Project. This will be the project that the run information flows into.
Test Directory	This is the root directory of where you keep all your QTP™

	<p>automated test cases. For example, if you keep have a directory c:\QTP 10 Projects on your hard drive and have all your projects suites below that directory, you would set this to c:\QTP10 Projects. If you use My Documents your directory maybe similar to this: C:\Users\YourName\Documents\QTP 10 Projects</p>
Host Name	This is your computer name. You can change this if you want the test logged under a different name.
Active	Leave checked. Uncheck if you ever want to suspend logging to ALMComplete / QAComplete temporarily.

Note: You may need to click on the TestComplete tab and uncheck the **Active?** box.

Pointing to Remote Tests

If your tests reside on a remote shared machine, use the ellipse to navigate to the Test Directory on that machine. *This must be the same directory used in **Remote Data Configuration** above.*



Note: this must be the full path, NOT a mapped drive.

Check the **Use Remote Data** checkbox to tell the registration to look for the Remote Data Utility on the shared machine.

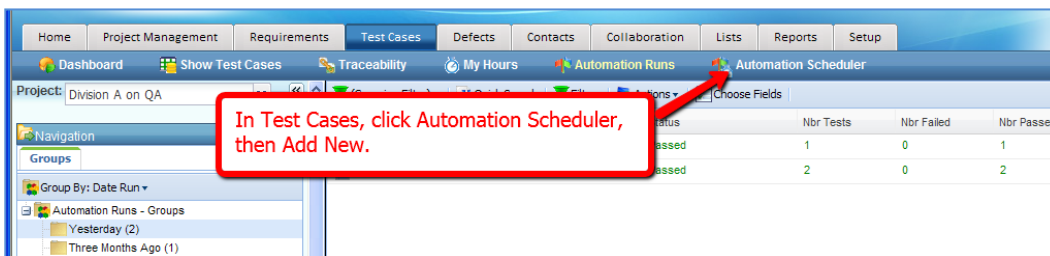
Logging Automated Run Results to SoftwarePlanner

Once you have installed the Automated Testing Bridge and configured your QTP™ registration, it will automatically log all runs to SoftwarePlanner. If you wish to disable it temporarily, uncheck the ACTIVE flag mentioned in the setup above.

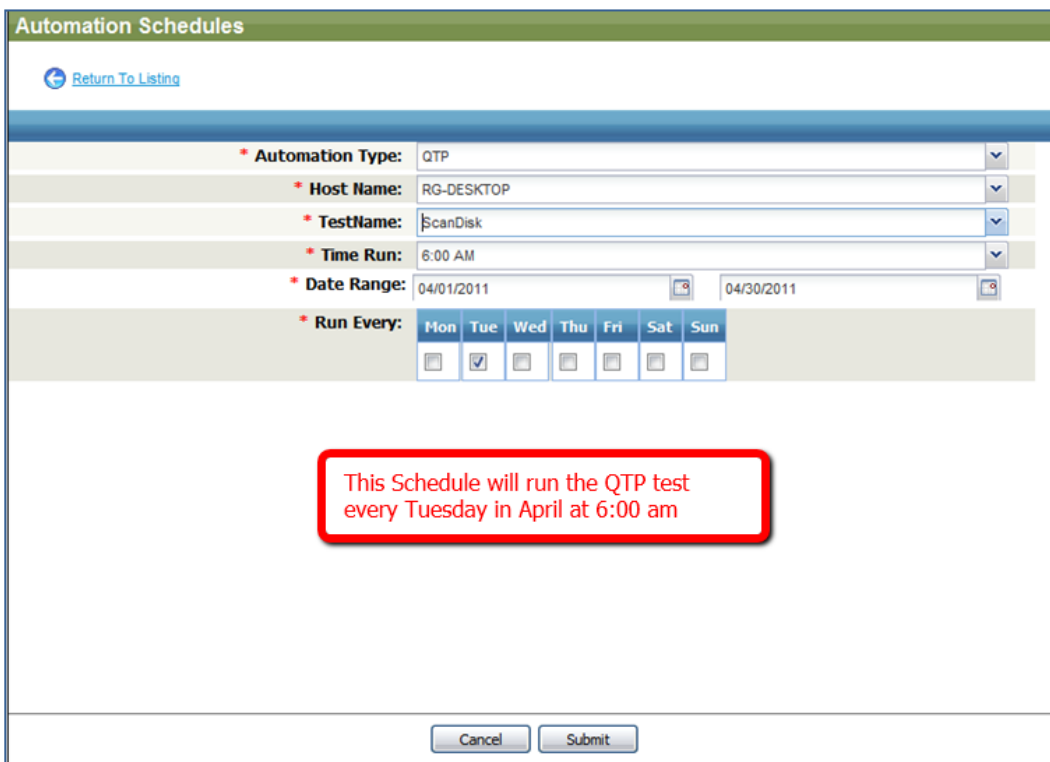
Automation Scheduler

In SoftwarePlanner, you can set up schedules to run QTP™ Tests automatically. You must have the most recent bridge installed and registered. When you install the bridge, a service is also installed that monitors for scheduled tests at regular intervals.

Go to Test Cases, click on Automation Scheduler, then Add New



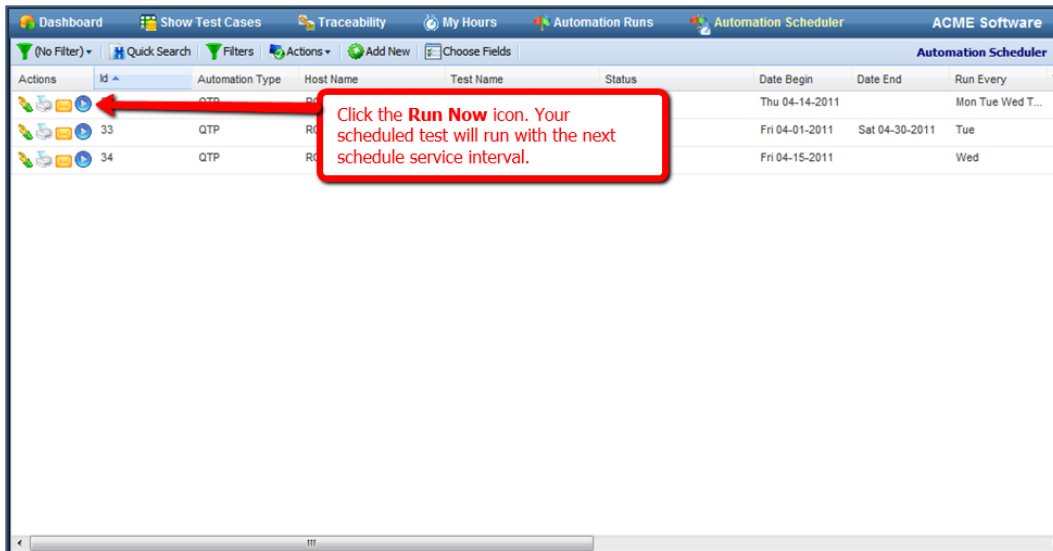
Click on the drop down arrow to select values for the fields.



- For **Automation Type** select QTP.

- The **Host Name** drop down will include the host where you configured the automation bridge.
- Select your QTP™ Test Name
- Select the desired time for the schedule using the **Time Run** drop down.
- The **Date Range** allows you to determine what date the schedule should start and what date it should end.
- Then select the desired day of the week using the **Run Every** checkboxes.
- Click **Submit** to save your schedule.

On the Automation Schedule listing screen, you can submit a scheduled test to run with the next schedule interval. Click the Run Now icon, and the test is submitted to run with the next schedule interval.



The results of your scheduled tests appear in Automation Runs along with any on-demand tests that you submitted from QTP™.

Tutorials

Below are some tutorials to get you started with QTP™ and SoftwarePlanner:

Tutorial 1 – Creating a QTP™ Test

When planning your automated testing strategy, it is important to decide how to best organize your QTP™ tests. Consider creating your tests as reusable modules, so that you can reuse them in many different scenarios, such as smoke tests and full regression suites.

Below is a movie that demonstrates how to create a QTP test:



Want to see how it works? Watch this movie:

http://www.softwareplanner.com/guidedtours/edgeui/Camtasia.asp?filename=SPQTPIntegration_Tutorial1

Tip: It is wise to keep your QTP™ tests Source Control (like Subversion, TFS, Perforce, etc) to ensure that you never lose any changes that are made.

Tutorial 2 – Reviewing Run Results from SoftwarePlanner

This tutorial demonstrates running Test Items in QTP™, then viewing the run history in SoftwarePlanner. It shows how to analyze runs in Software Planner and generate dashboard-type reports.



Want to see how it works? Watch this movie:

http://www.softwareplanner.com/guidedtours/edgeui/Camtasia.asp?filename=SPQTPIntegration_Tutorial2

Tutorial 3 – Scheduling Automated Runs for QTP™

Once your QTP™ tests are created, you will most likely want to schedule them to automatically run at regular intervals. You can do this via SoftwarePlanner, this movie explains how (this movie describes how to do it with TestComplete, but the steps are very similar (choose Automation Type of QTP™).



Want to see how it works? Watch this movie:

<http://www.softwareplanner.com/Movies.asp?Topic=AutomationScheduler>

Getting Help

If you have any questions about how to setup the Automated Testing Bridge or if you have suggestions for future enhancements, please contact our Support team by filling out a support ticket at <http://www.softwareplanner.com/support>. Your feedback is important to us!